

LOCAL & STATE

THE DAILY UNION. FRIDAY, SEPTEMBER 30, 2011

3A

IN BRIEF

JUNCTION CITY

WREATHS ACROSS AMERICA BREAKFAST FUNDRAISER

The Junction City Elks No. 1037 will be holding a fundraiser breakfast for "Wreaths Across America" in honor of fallen veterans and soldiers from 7 to 11 a.m. on Saturday at the Elks Lodge, 723 S. Washington St. \$5 is the suggested donation for a breakfast of biscuits and gravy, eggs, sausage, coffee and juice.

ST. JUDE'S CHILDREN'S HOSPITAL FUNDRAISER

Zeta Phi of Epsilon Sigma Alpha will hold a yard sale starting at 8 a.m. Saturday at 520 W. Pine St. All items are for sale are by donation only and 100 percent of the proceeds will go to St. Jude's. If you

McDowell Creek artist wins native plant award

w/pic

Special to The Daily Union

The Kansas Native Plant Society has named a resident of eastern Geary County the winner of its 2011 Rachel Snyder Memorial Landscape Award.

Betsy Knabe Roe, a fiber artist living at Bird Runner Wildlife Refuge on McDowell Creek, received the award for her creations of "Revival" and "Etain," interactive outdoor installations on a prairie restoration site at the refuge.

Roe's sculptures and activities are designed to harmonize with the natural processes through which a native plant community can re-emerge, even on a thoroughly disturbed site, as well as the maintenance practices used with native prairie itself.

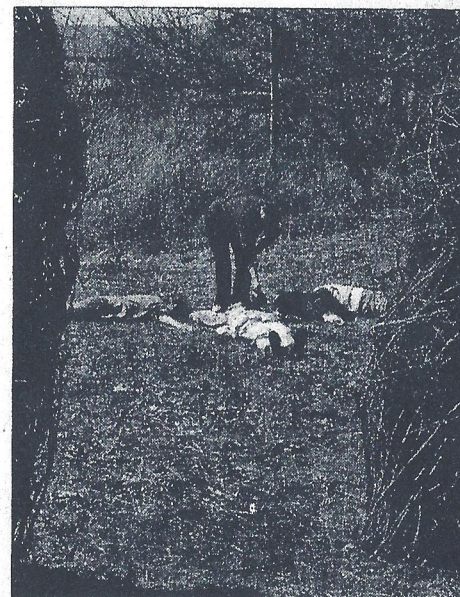
For "Revival," Roe created 27 scul-

tures using the branches of invasive dogwood gathered when the shrubs were cleared from native prairie. For "Etain," named for a Celtic figure of transformation, Roe asked participants to lie down among the sculptures while she outlined their bodies with native wildflower seeds.

"Revival" and "Etain" are dedicated to the memory of conservationist Jan Garton, who lived from 1949 to 2009.

Roe, a curator at the Sabatini Gallery in Topeka and creator of many installations in Kansas and Missouri, also was recognized for introducing Kansas to the art of making paper from native plants and for fostering a native-plant garden at Washburn University.

The Rachel Snyder Landscape Award was presented to Roe at the KNPS annual convention in Lawrence on Sept. 17.



Participants in the interactive installation "Etain" (named for a Celtic figure of transformation) lie on the ground while Betsy Roe outlines their forms with native wildflower seeds.

PHOTO PROVIDED
BY MARGY STEWART